

KellyDown Tips

Periodic tips to help you use KellyDown more effectively

How to change the system colours in KellyDown

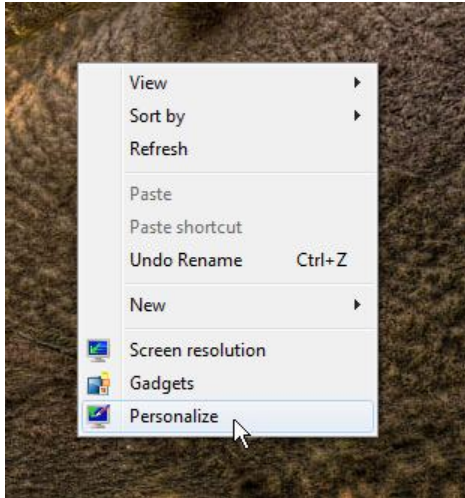
Problem: A few people have commented on the fact that they are unable to read the text in KellyDown because of the colours on many of the forms, particularly in the spreadsheet modules.

	Target Name	Inclination (°)	Azimuth (°)	Vertical Depth (m)	Northings (m)	Eastings (m)
▶ 1	AA16 LP	90.00	65.00	486.60	214.60 S	519.36 E
2	AA16 LP (1)	82.75	131.74	453.14	124.96 S	140.08 E
3	AA16 LP (2)	90.00	65.00	486.60	239.95 S	464.98 E

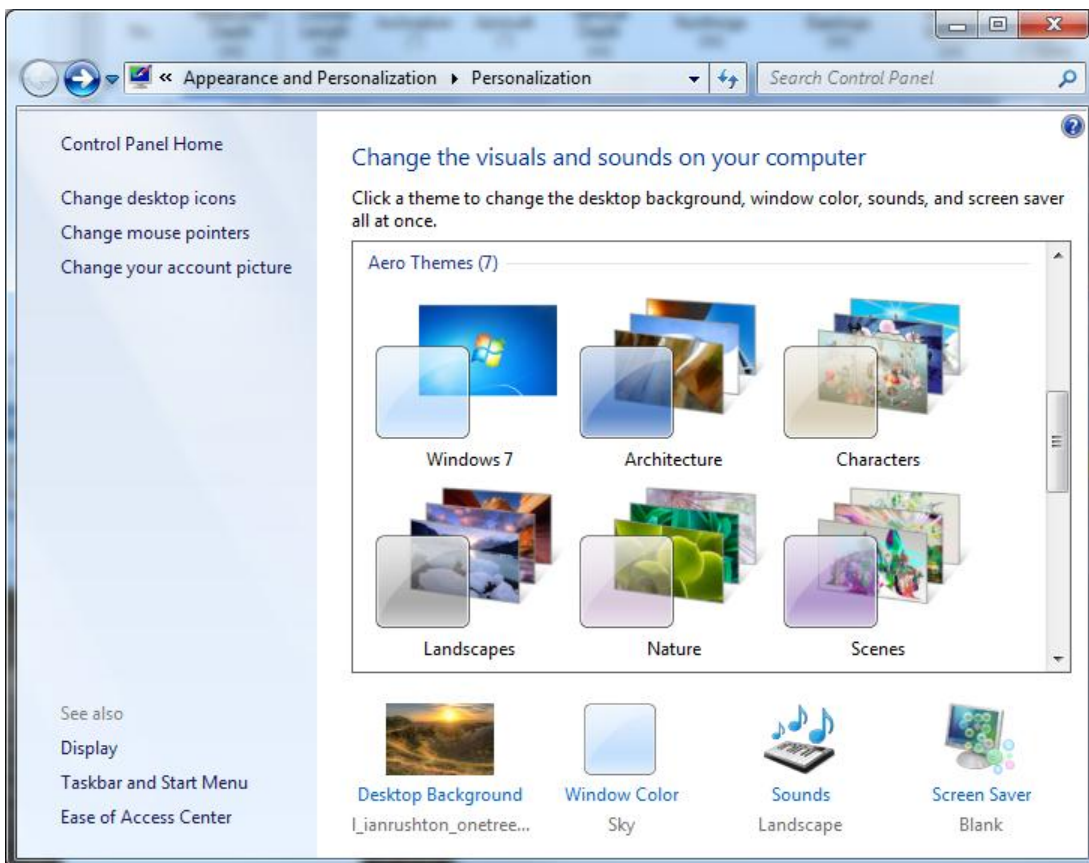
No.	Measured Depth (m)	Course Length (m)	Inclination (°)	Azimuth (°)	Vertical Depth (m)	Northings (m)	Eastings (m)	Vertical Section (m)	Dogleg Rate (°/30m)	Toolface (°)
▶ 1	0.00		0.00	0.00	0.00	0.00 N	0.00 E	0.00		
2	240.00	240.00	0.00	0.00	240.00	0.00 N	0.00 E	0.00	0.000	0.00
3	550.30	310.30	82.75	131.74	453.14	124.98 S	140.08 E	126.69	8.000	131.74
4	673.28	122.98	82.75	131.74	468.67	206.20 S	231.11 E	209.02	0.000	0.00
5	924.29	251.01	90.00	65.00	486.60	239.97 S	464.98 E	438.26	8.000	-86.89
6t	984.29	60.00	90.00	65.00	486.60	214.62 S	519.36 E	494.93	0.000	0.00
7t	1,784.29	800.00	90.00	65.00	486.60	123.48 N	1,244.41 E	1,250.51	0.000	0.00
8	1,794.29	10.00	90.00	65.00	486.60	127.71 N	1,253.47 E	1,259.96	0.000	0.00

Cause: KellyDown is designed to Microsoft Windows specifications and rather than hard-code colours or allow custom configurations for the user interface, it relies on the **Windows Display Settings**. One consequence of this however is that it is also affected by the Windows Themes and if the current theme doesn't have enough contrast between the text and background colours, it will be difficult to see some of the information in KellyDown.

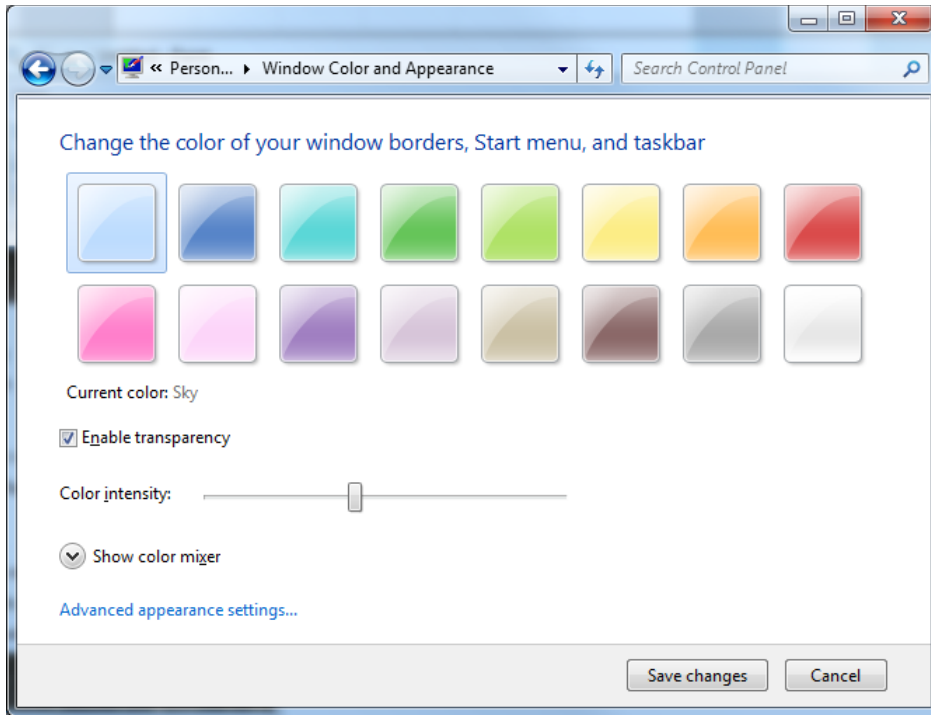
Solution: The solution depends on the version of Windows that is installed on your computer. For Windows 7 or later, you first need to load the Windows Personalisation module. To do this, right click anywhere on the windows Desktop Background and select Personalisation from the pop-up menu. If you are using Windows XP, skip the first few steps and go directly to the section on **Windows Colour and Appearance**.



You may either select a different theme that has more contrast; the **Windows 7** theme is a likely candidate, or you may click on **Window Colour** link at the bottom of the dialog to selectively change one or more of the colours.

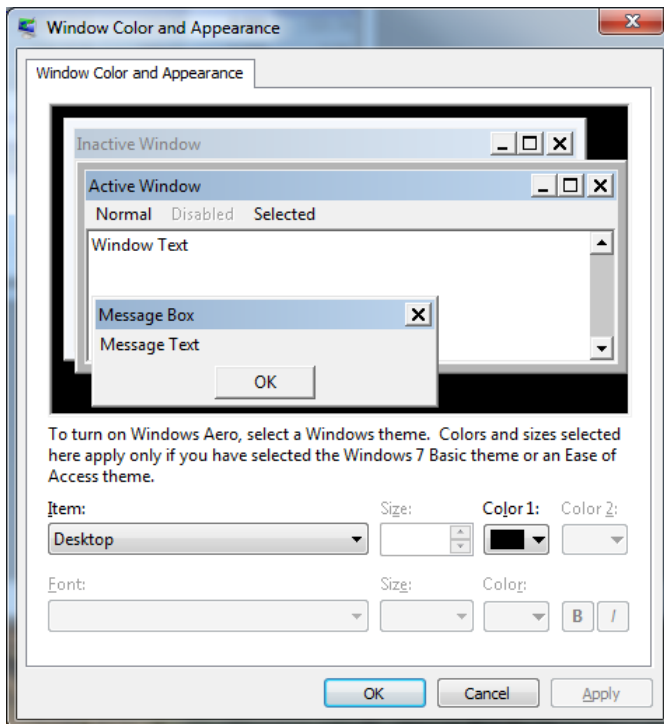


In the **Window Color and Appearance** dialog, click on the **Advanced appearance settings** link at the bottom.

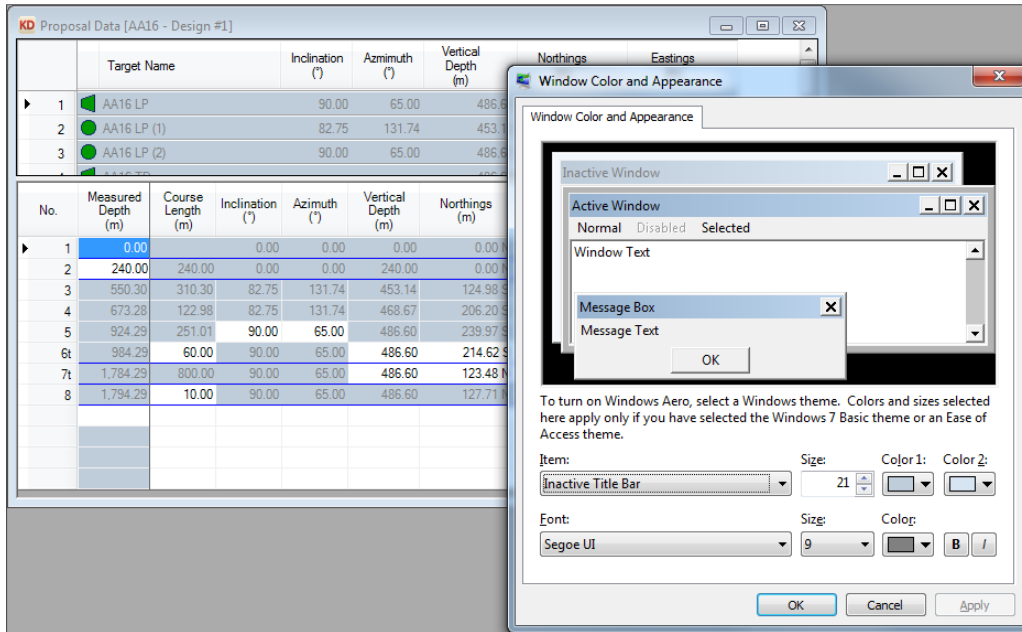


The legacy **Windows XP** Windows Color and appearance box opens where you can set the individual colours.

Tip: It is a good idea to have KellyDown open while you adjust the colours so you can instantly see whether the colours are suitable.

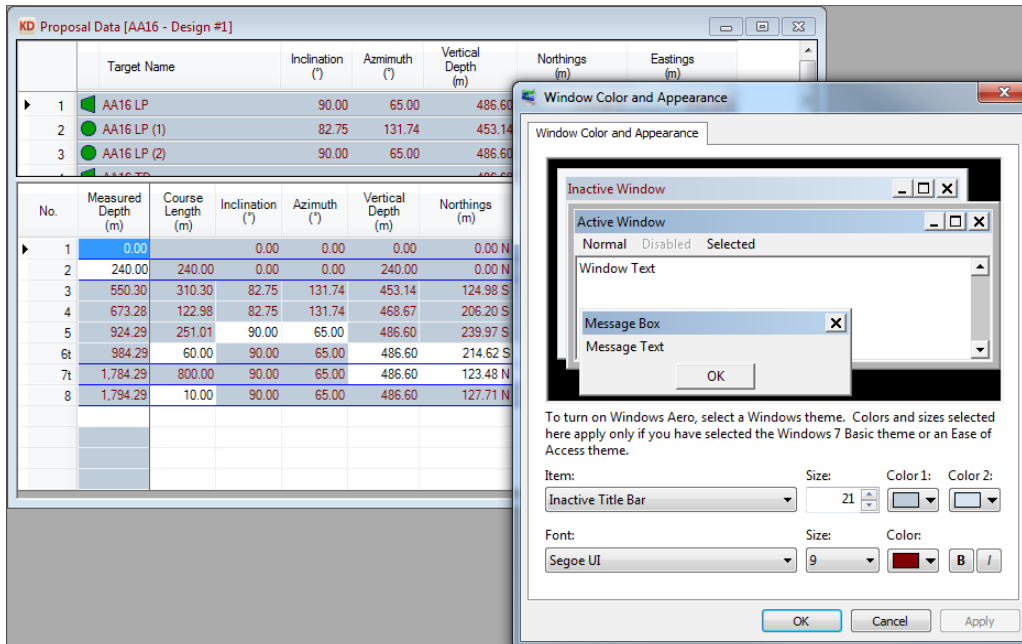


Select the **Item** drop-down list and use the up and down cursor keys to cycle through the different items until you see the one whose colours match the one you wish to change. For example, if you wish to change the colour of the disabled spreadsheet cells, cycle through the Items until you see the colour combinations on the right that match the current disabled cells colour.



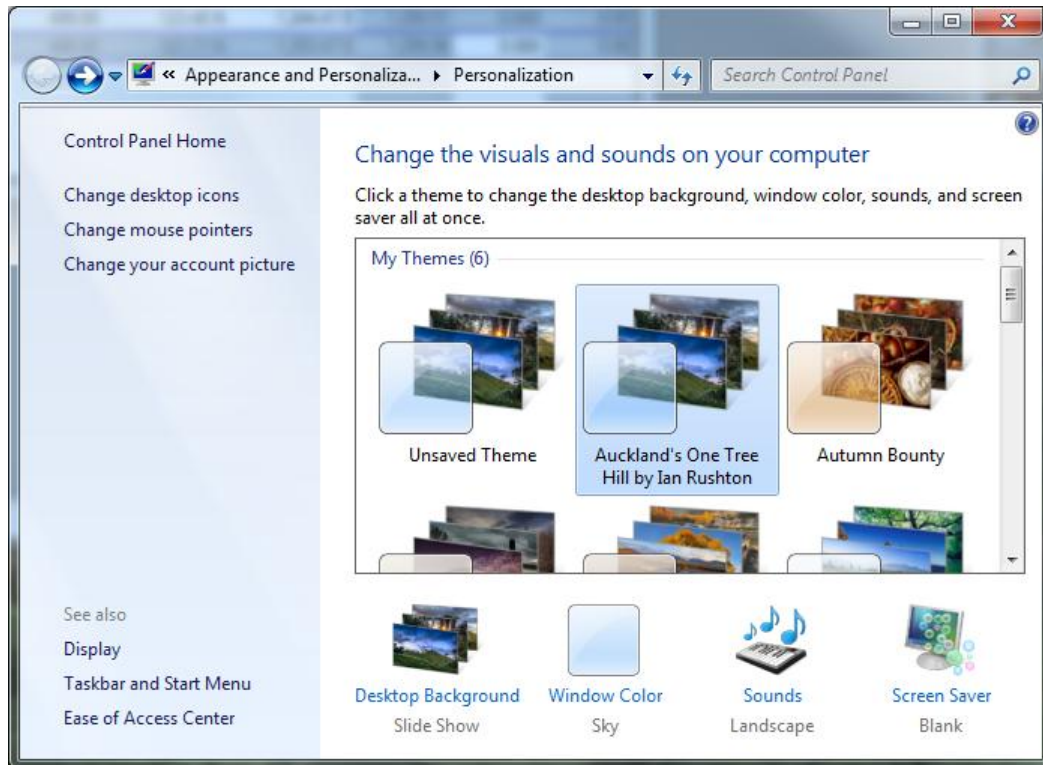
The colour of disabled spreadsheet cells happens to correspond with the **Inactive Title Bar** item in the list, so select this Item and then change the **Item Color1** and **Font Color** colours to suit your preferences.

Click on the **Apply** button to instantly see what the spreadsheet looks like in those colours.



When you are satisfied with your colour choice, click on the **OK** button to save the changes and exit the dialog or click on the Cancel button to return to the original colours.

If you want to revert to the original colours of the theme, select it from the list of Themes in the Personalisation dialog.



If you have a question you would like answered in KellyDown Tips, reply to this email with your question.
If you would like anything added to KellyDown to make it more useful or user friendly, reply to this email with your requests.
You can download the latest version of KellyDown from www.kellydown.ca
If you would like to be removed from this email distribution list, reply with "Unsubscribe" in the subject line.
