

KellyDown Tips

Periodic tips to help you use KellyDown more effectively

Installing KellyDown through Windows™ Defender

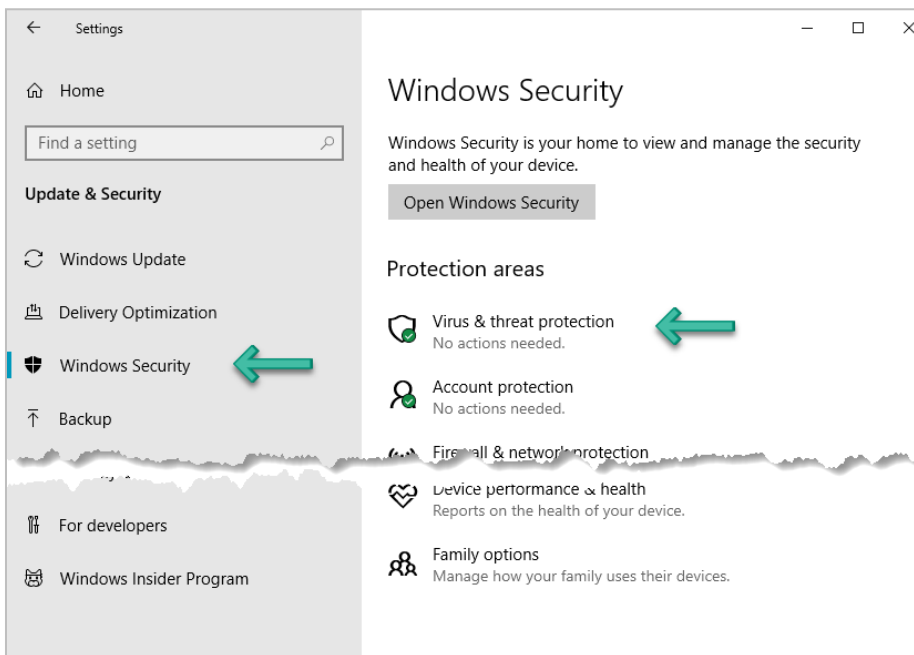
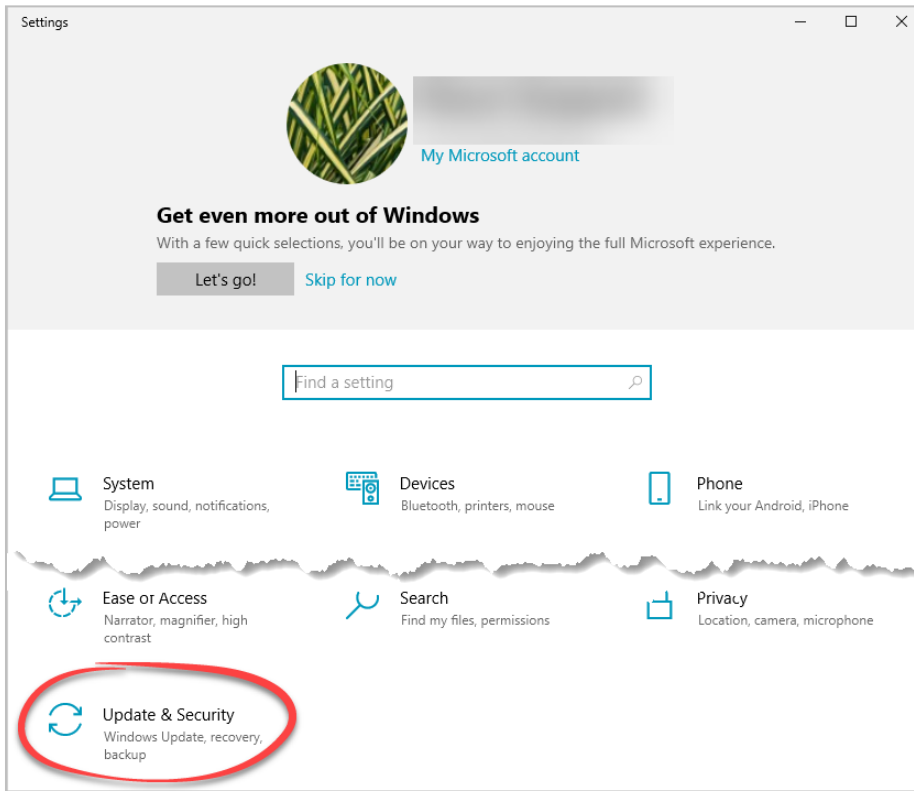
Question: I am trying to install KellyDown on to my computer but Windows Defender keeps deleting the setup file during the install causing the installer to display an error message.

Problem: By default, Windows Defender and other anti-virus applications prevent executable files that have been downloaded from the internet from running on your computer. You need to exclude the KellyDown install file from the list of restricted files in order to allow KellyDown to be installed.

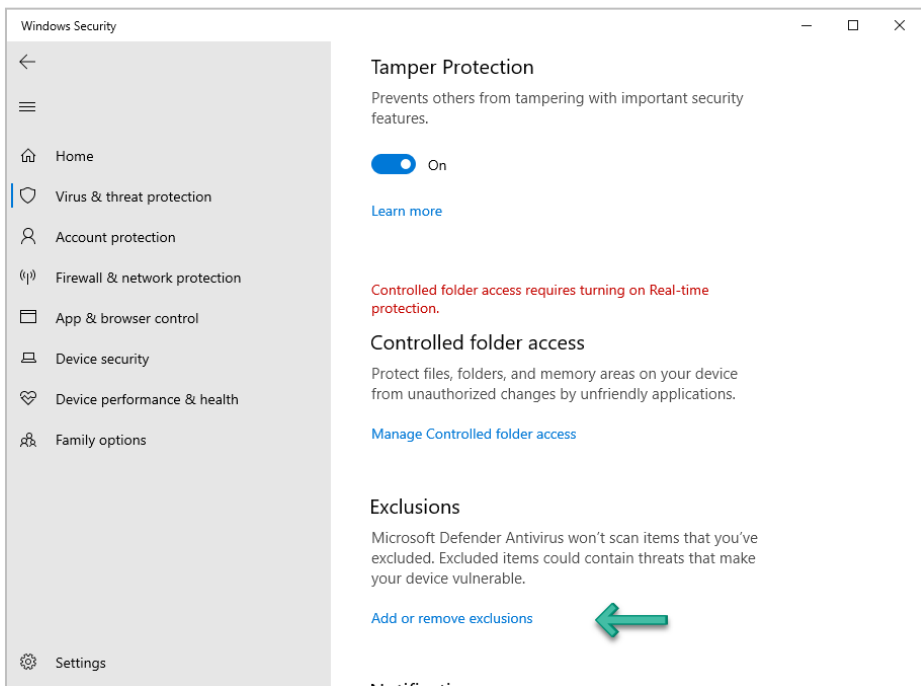
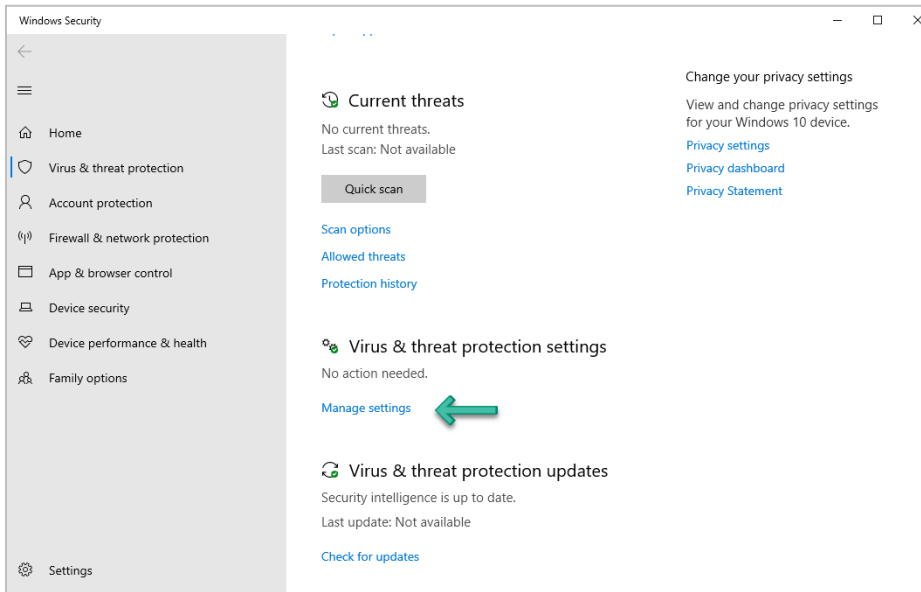
Solution: The easiest solution is to add the folder where KellyDown routinely downloads its install files to the list of excluded files and folders. This will allow KellyDown to download and install future updates to the software and manuals etc.

Important: Microsoft recently introduced a new security mode for Windows 10 and Windows 11 Home editions named **S Mode**, which prevents any applications from being installed onto the computer unless it has been downloaded from the Microsoft Windows online store. Please see the end of this document for instructions on how to switch **S-Mode** off so that KellyDown may be installed onto Windows 11 Home computers.

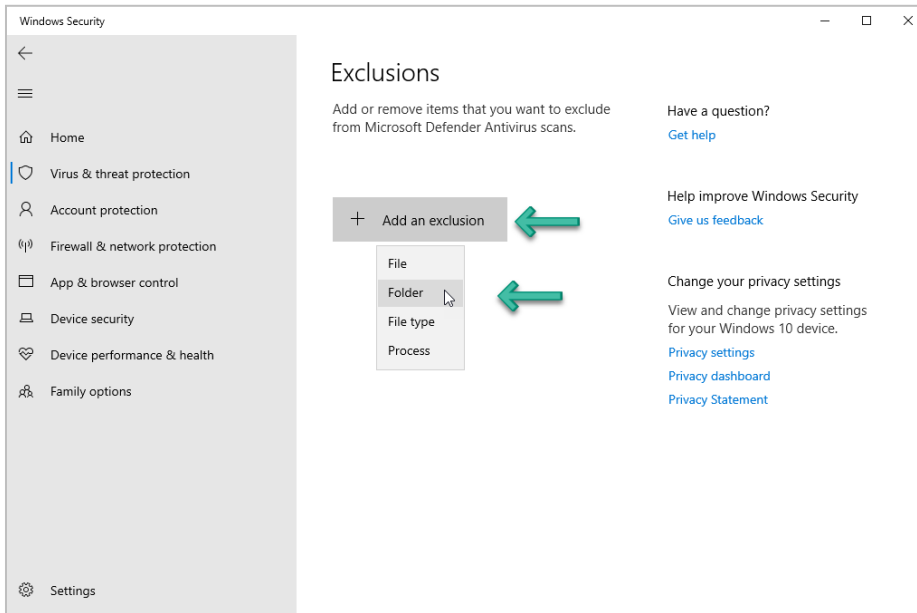
1. Go to **Start, Settings, Update & Security, Windows Security, Virus & threat protection.**



2. Select **Manage settings** and then under **Exclusions**, select **Add or remove exclusions**



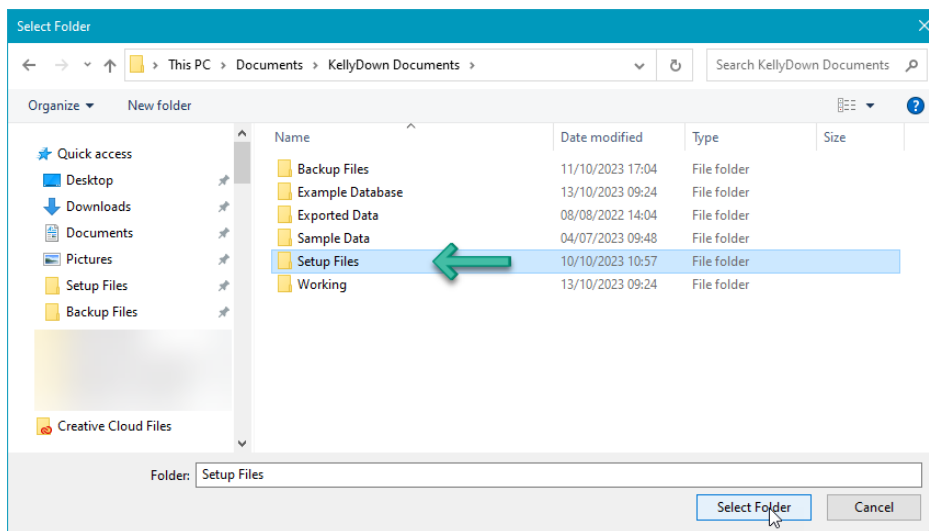
3. Click on **Add an exclusion** and select **Folder** from the drop-down menu.



4. Locate and select the folder that KellyDown uses to download and install updates, which by default is...

C:\Users\Owner\Documents\KellyDown Documents\Setup Files

5. Click on the **Select Folder** button.



6. You should now be able to download and install KellyDown without any issues.

Microsoft Windows S Mode

1. Windows 11 in S mode is designed for security and performance, exclusively running apps from the Microsoft Store. If you want to install an app (such as KellyDown) that isn't available in the Microsoft Store, you'll need to switch out of S mode.
2. Switching out of S mode is one-way. If you make the switch, you won't be able to go back to Windows 10 or Windows 11 in S mode.
3. To switch off Windows S Mode, follow these steps:-
 - a. On your PC running Windows 11 in S mode, open **Settings, System, Activation**.
 - b. In the **Switch to Windows 11 Pro** section, select **Go to the Store**. (If you also see an "**Upgrade your edition of Windows**" section, be careful not to click the "*Go to the Store*" link that appears there.)
 - c. On the **Switch out of S mode** (or similar) page that appears in the Microsoft Store, click on the **Get** button. After you see a confirmation message on the page, you'll be able to install apps from outside of the Microsoft Store.

If you have a question you would like answered in KellyDown Tips, reply to this email with your question.
If you would like anything added to KellyDown to make it more useful or user friendly, reply to this email with your requests.
You can download the latest version of KellyDown from www.kellydown.ca
If you would like to be removed from this email distribution list, reply with "Unsubscribe" in the subject line.
