

KellyDown Tips

Periodic tips to help you use KellyDown more effectively

Creating a KellyDown database on an external drive

Problem: I'm running low on space on Drive C:. How do I create a database on an external drive?

Solution: You can create a KellyDown database on an external drive in exactly the same way as you create KellyDown databases on the primary Drive C:.

By default, the KellyDown setup routine creates an example database on the same drive as the application is installed but there is no reason why you can't create other databases on different fixed or removal drives. It's always a good idea though to have your working database on a permanent drive so it is always available.

If you have created a KellyDown database on a removable drive and the removable drive isn't attached when KellyDown starts, its link will be removed from the list of databases in the **Recent Files** menu. Next time the drive is attached though, you simply need to locate it using the **Open Database** menu.

Before creating a new database, it is important to understand the functions of the two parts of a KellyDown database.

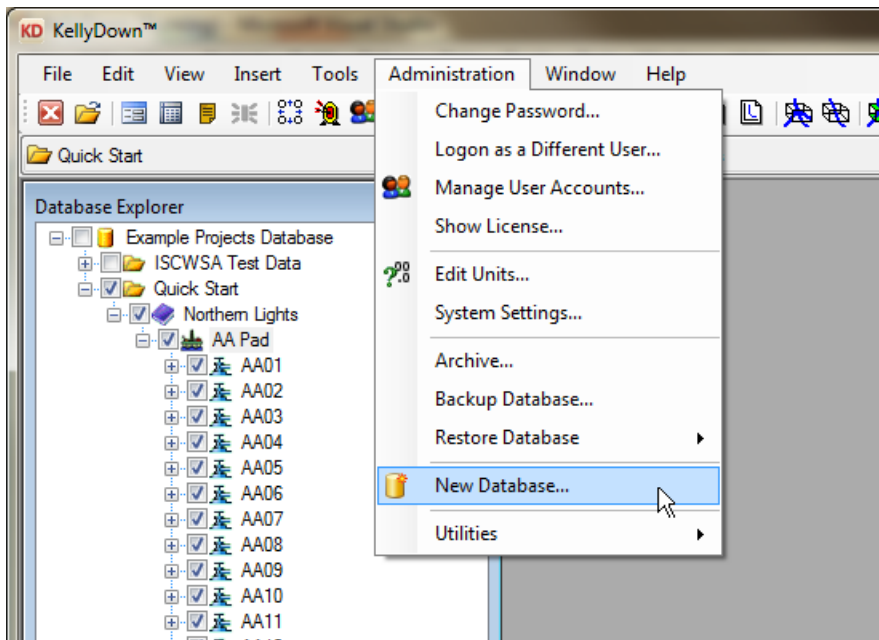
A KellyDown database consists of two parts; the **System** part and the **Projects** part. The **System** part contains all common information such as company details (logo, name, colour etc.), a list of all customers and their details, default lists (formation tops, survey tools, casing sizes, drillstring components, magnetic models etc.), custom settings, aliases and units etc. The **Projects** part contains all information specific to each of the projects such as names, coordinates, elevations of the structures, wells, proposals and surveys, drill runs, hard lines and targets etc.

You must decide whether you want to create a new **System** part as well as a new **Projects** part when you create a new database. If you create a new **System** part, it will be empty of all the customer information that currently exists in the existing database so you will need to enter this information from scratch or import it. The advantage of having a new separate **System** database is that you can open the database on any computer on which KellyDown is installed and the removable drive is attached. If you are creating a new database on a removable drive, you should really include a new **System** database to avoid any data integrity issues.

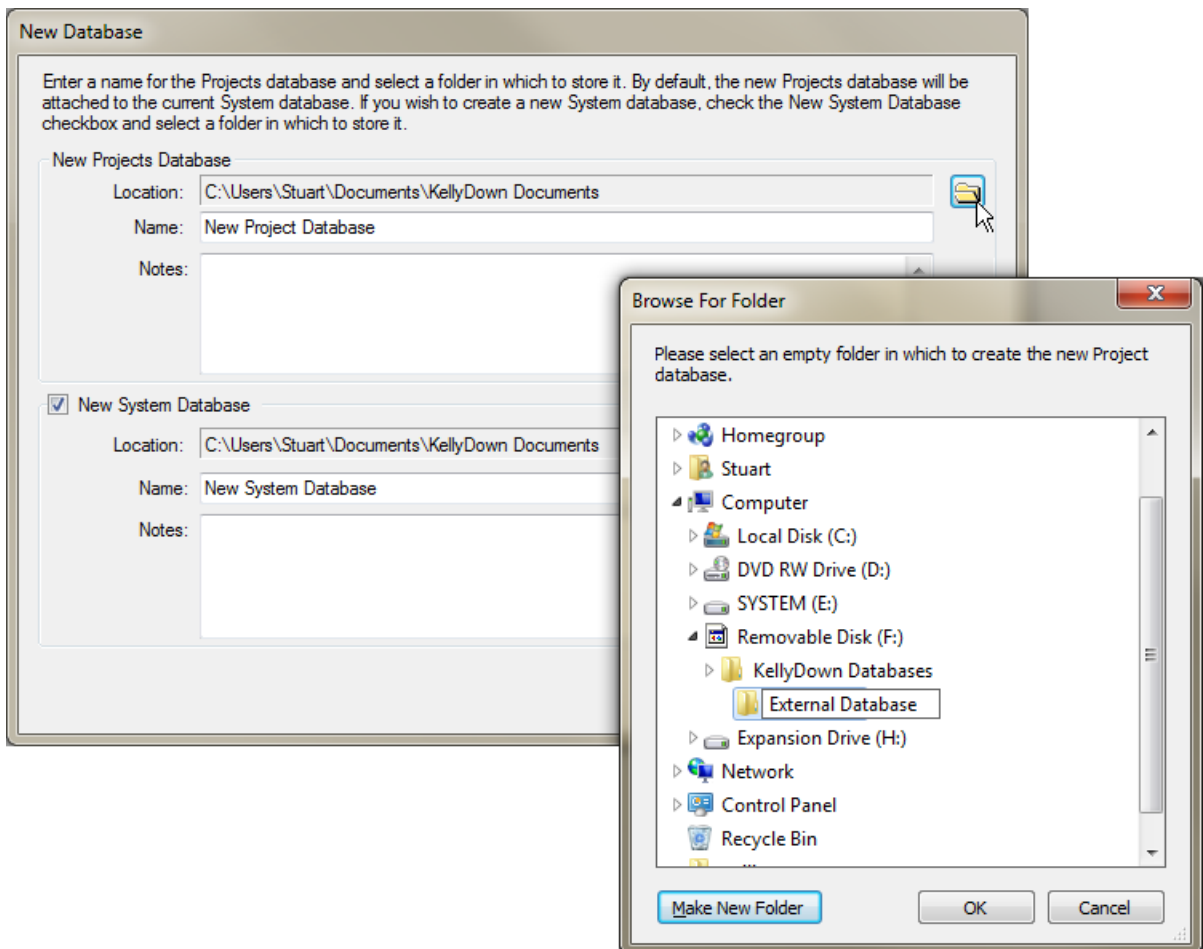
If you don't create a new **System** part, the current **System** database will be used, which may be on a different drive. This means that the **Projects** database may only be opened on the computer on which it was created if the **System** database is on the hard drive of that computer. The advantage of sharing a common **System** database is that all the system information is available to the new **Projects** database and you don't have to start from scratch with customer details etc.

To create a new KellyDown database on an external drive, follow these steps:-

1. Select the **Administration, New Database** menu.

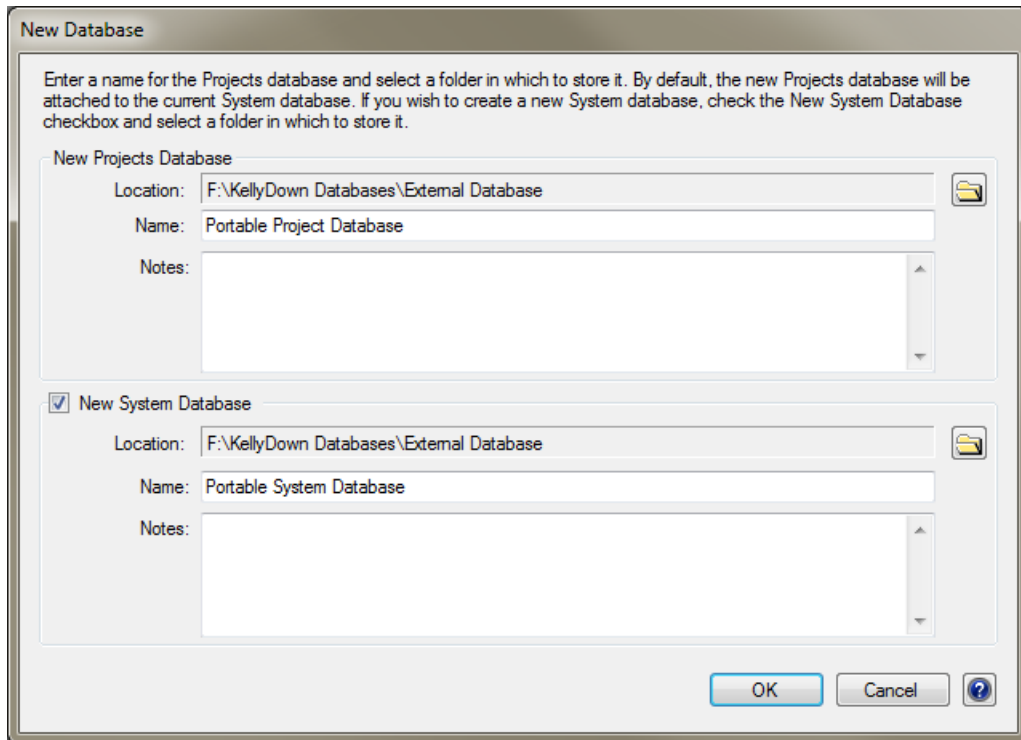


2. Click on the **Folder** button next to the **Location** field on the **New Database** window to open the **Browse For Folder** window.



3. Locate the appropriate removable drive/disk under the **Computer** node in the **Browse For Folder** dialog.

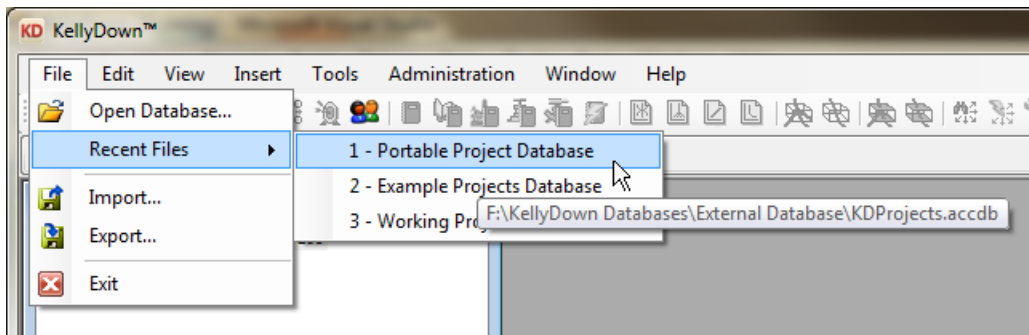
4. It's always a good idea to create a new folder in which to store the KellyDown data. Use the **Make New Folder** button at the bottom of the screen to create a folder and give it a suitable name, i.e. *External Database*.
5. After creating the new folder, make sure it is selected and then click on the **OK** button to return to the **New Database** window.
6. Check the **New System Database** checkbox and give appropriate names to both the **Projects** database and the **System** database.



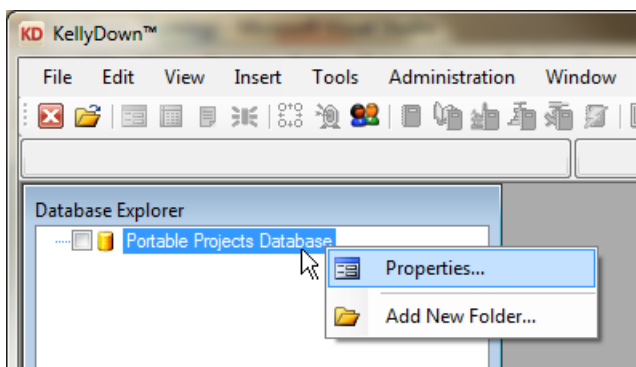
7. If you wish, you may enter notes describing the data in the new database. This information isn't used anywhere in KellyDown; it's just for future reference.
8. Click on the **OK** button to create the new **System** and **Projects** databases.
9. If you created a new **System** database, you will be prompted to enter a **New Password**. After doing so, enter a **Password Hint** to remind you of the password.



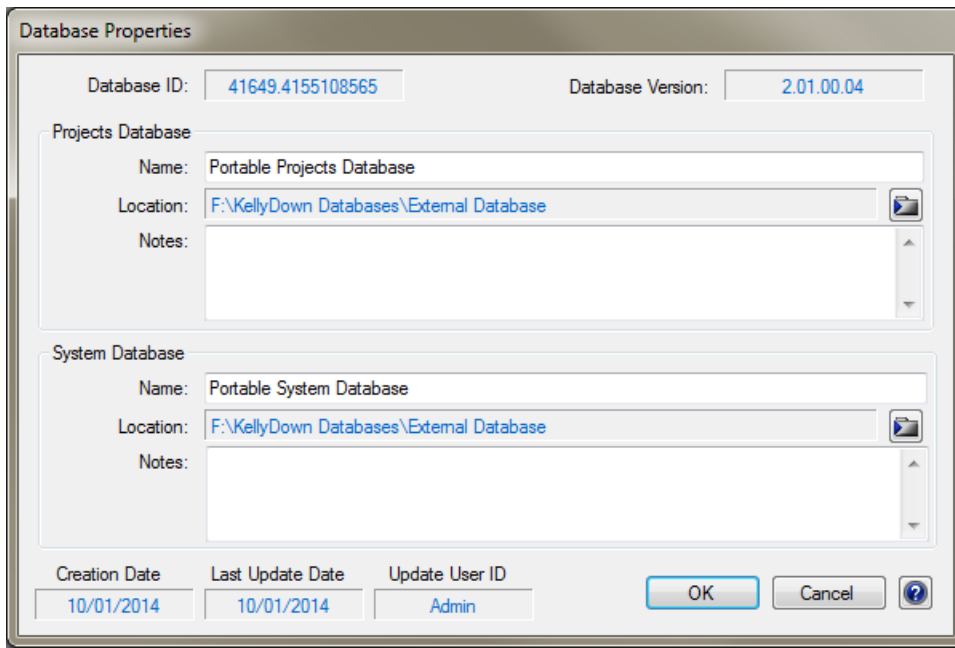
10. Click on the **Continue** button to open the new database.
11. The new database and your existing databases will appear in the **Recent Files** list enabling you to easily switch between databases.



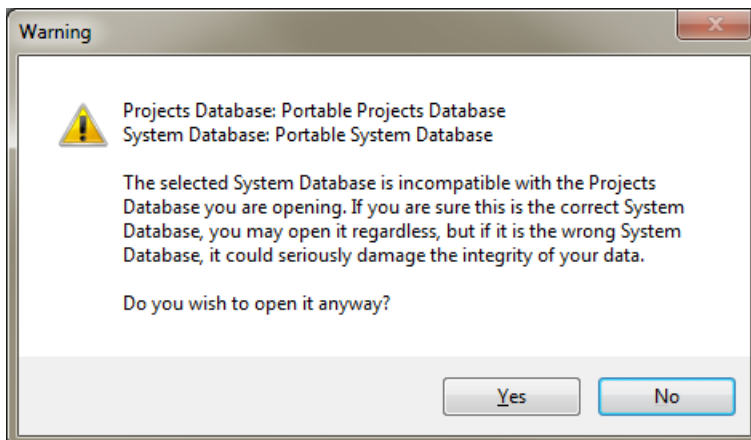
12. Right click on the **Database** node (the only node) in the **Database Explorer** and select **Properties**.



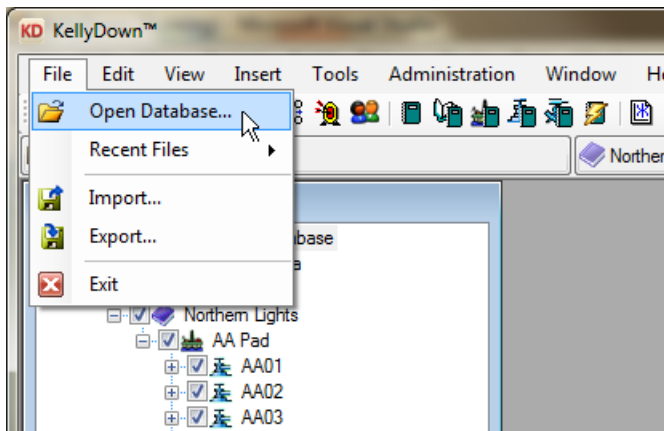
13. The **Database Properties** dialog shows the properties of the database. The **Database ID** is a unique identifier for the **System** database.



14. All **Projects** databases that are attached to the **System** database must have the same **Database ID**; otherwise KellyDown will display a warning when it opens the database. This ensures that the integrity between **System** and **Projects** databases is maintained.



15. If you answer **Yes**, KellyDown will link the two databases and set the IDs to the same value. You should only ever do this if you are absolutely sure that the two databases are compatible. If you answer **No**, KellyDown will open a dialog that will allow you locate the correct **System** database on your computer.
16. If you subsequently start KellyDown with the removable drive removed, KellyDown will simply open the next database on the list of **Recent Files**. If you wish to open the database on the removable drive, you must use the **File, Open Database** menu to locate it again.



If you have a question you would like answered in KellyDown Tips, reply to this email with your question.
If you would like anything added to KellyDown to make it more useful or user friendly, reply to this email with your requests.
You can download the latest version of KellyDown from www.kellydown.ca
If you would like to be removed from this email distribution list, reply with "Unsubscribe" in the subject line.
