

# KellyDown

## Software Release Notes

Version 4.01.08.06 – April 2026

---

### A. Software Description

KellyDown is a well-planning and survey monitoring application designed specifically for use by well-planners and/or directional drilling coordinators at the rig-site or in the drilling office. It comprises an advanced multi-well relational database, sophisticated well-planning and survey data entry interfaces with smart data import and export modules, intuitive correction run and project-ahead modules, a comprehensive anti-collision module and full reporting capability. Its main advantage over similar products is its comprehensive list of features coupled with its user-friendly interface.

In the well-planning office, it is used to import or create multi-structure projects, configure multi-well slot templates, design simple and complex well plans, define casing programs, survey tool programs etc. and test for collision avoidance.

During the drilling stage, it is used by the directional drilling coordinator to achieve the optimum well path to one or more targets while also testing for proximity against adjacent wells in the drilling project and produce customised and professional looking reports right at the rig site.

KellyDown has been tested on Windows® XP (SP3), Windows® Vista, Windows® 7, Windows® 8, Windows® 10 and Windows® 11.

### B. System Requirements

To use KellyDown, you need:

- The Microsoft® Windows® XP (SP3) through Windows® 11 operating system.
- An Intel or Intel-compatible processor.
- At least 8 GBytes of installed memory (16 GBytes recommended).
- At least 500 MBytes of free disk space.

### C. Installing KellyDown

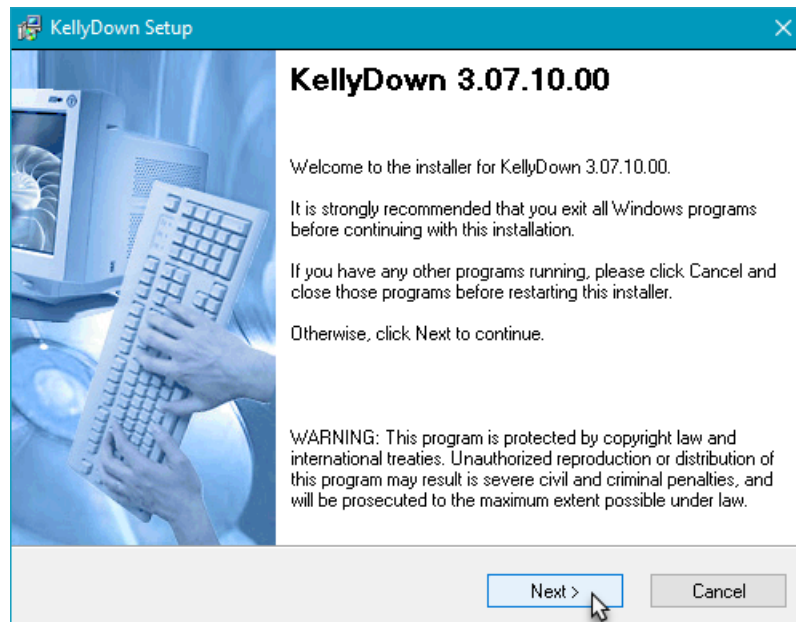
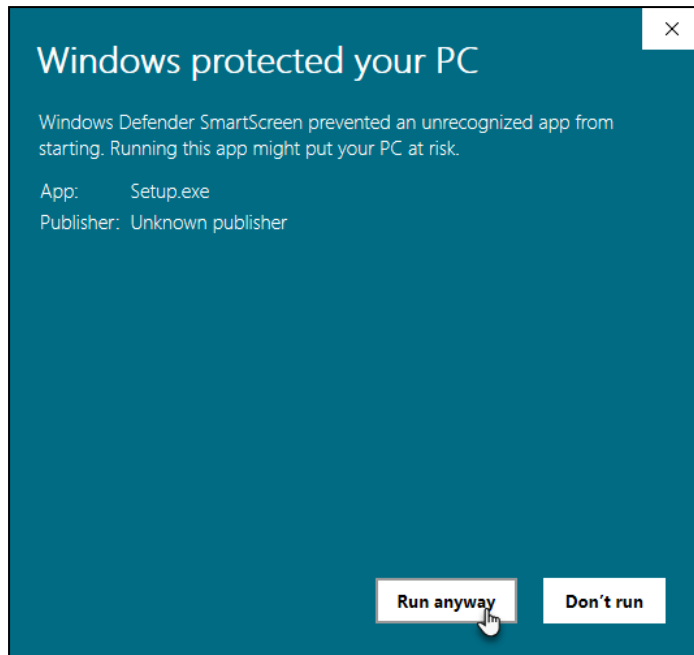
Click [here](#) to go to the KellyDown website.

Download the KellyDown Setup file from the KellyDown website to your computer. To do this, simply click on the two red **Download Setup.zip** button. By default the files will be downloaded to your **Downloads** folder. After the download has completed, click on the **Open Folder** button to go to the **Downloads** folder.



Open the *KellyDown\_Setup\_3.07.10.00.zip* file (or whichever version was downloaded), right click on the *Setup.exe* file and select **Copy** from the popup menu. Return to the **Downloads** folder, right click anywhere in the folder and select **Paste** from the popup menu to copy *Setup.exe* to the **Downloads** folder.

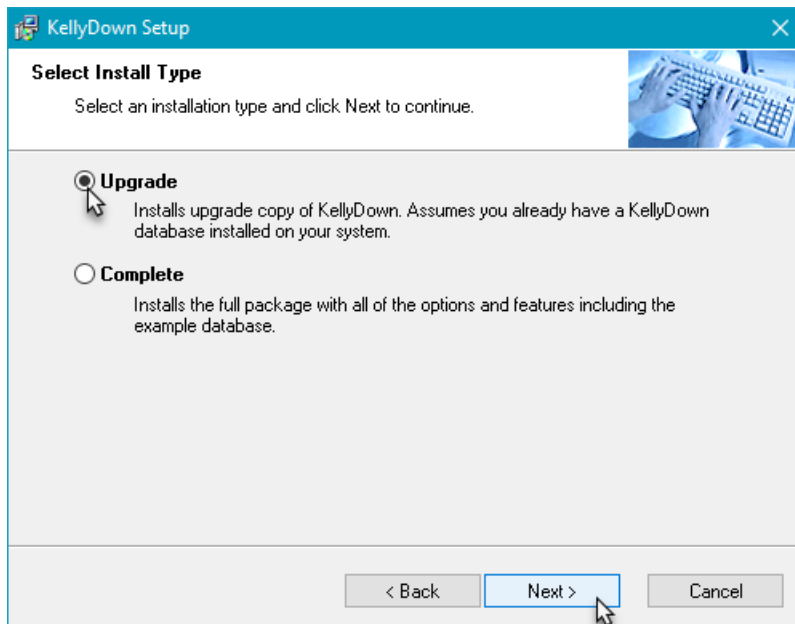
Next double click on *Setup.exe* file to launch the KellyDown Setup routine. If Windows asks if you want to allow the program to continue and/or to make changes to your hard drive, click **Yes** or **Run this program anyway**. If Windows tells you that **Windows protected your PC**, click on the **More Info** link and then click on the **Run anyway** button.



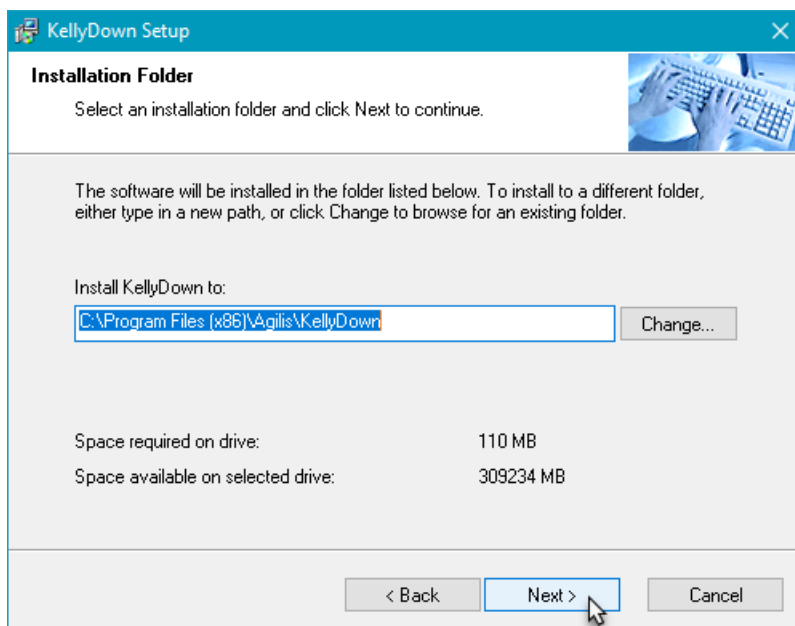
Follow the instructions shown in the KellyDown Setup. When asked to select an **Install Type**, decide whether you want to install the *Example Database* or not.

If this is the first time that KellyDown has been installed on your computer, you should select the **Complete** option, which will install KellyDown and the KellyDown **Example Database** onto your computer.

If KellyDown was already installed on your computer, select the default **Upgrade** option. This will install the new version of KellyDown without overwriting your existing KellyDown database.

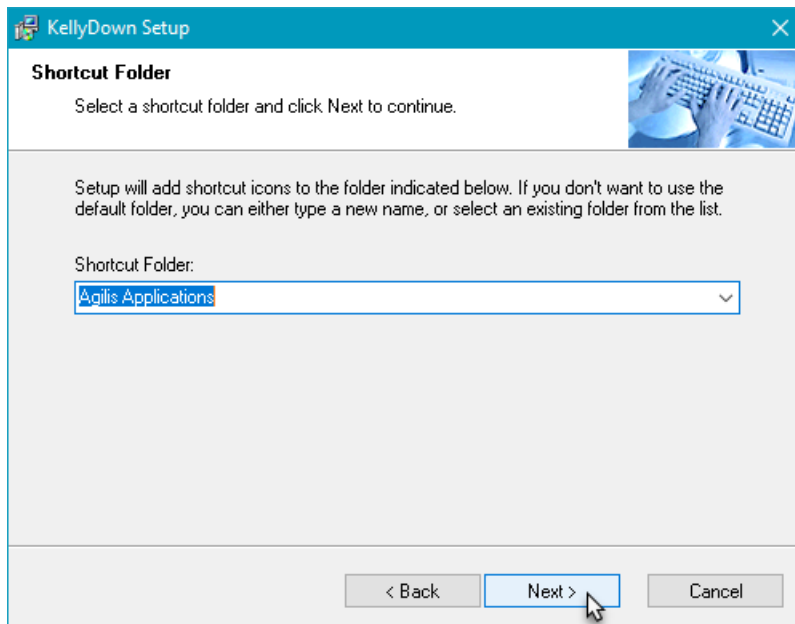


KellyDown Setup will ask where you want to install the software. It is recommended that you install the software in the default location.

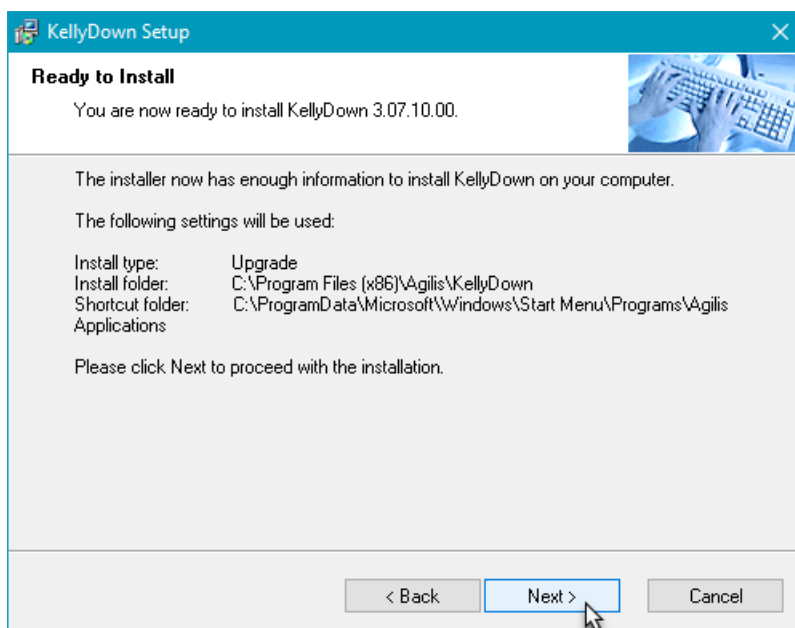


Space required on drive:	110 MB
Space available on selected drive:	309234 MB

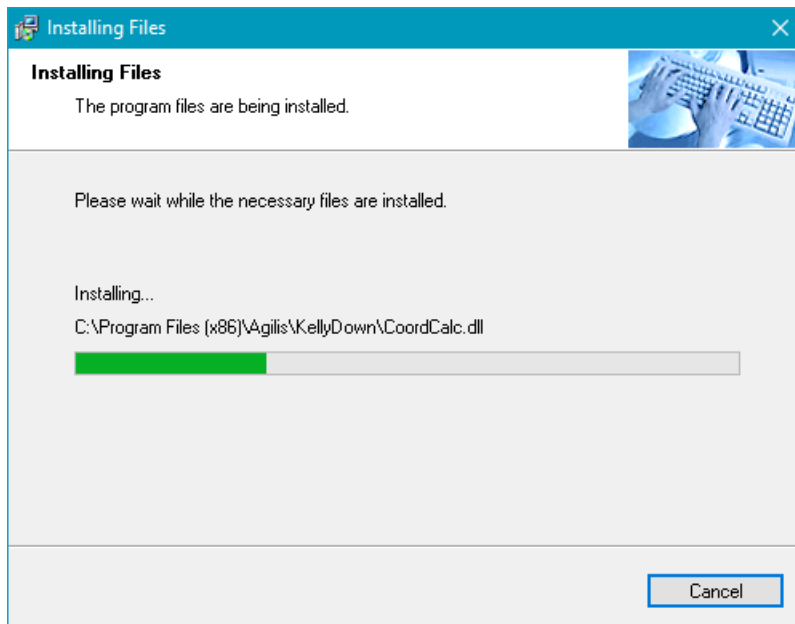
Next, KellyDown Setup will ask where the shortcut icons are to be installed. If you prefer to install the shortcut icons into a different location, select it from the drop-down list. KellyDown Setup will install icons for the software, the User Manual, the QuickStart Guide and for the Uninstall routine. A shortcut for the software will also be installed on your desktop. Delete it afterwards if you do not want it on your desktop.



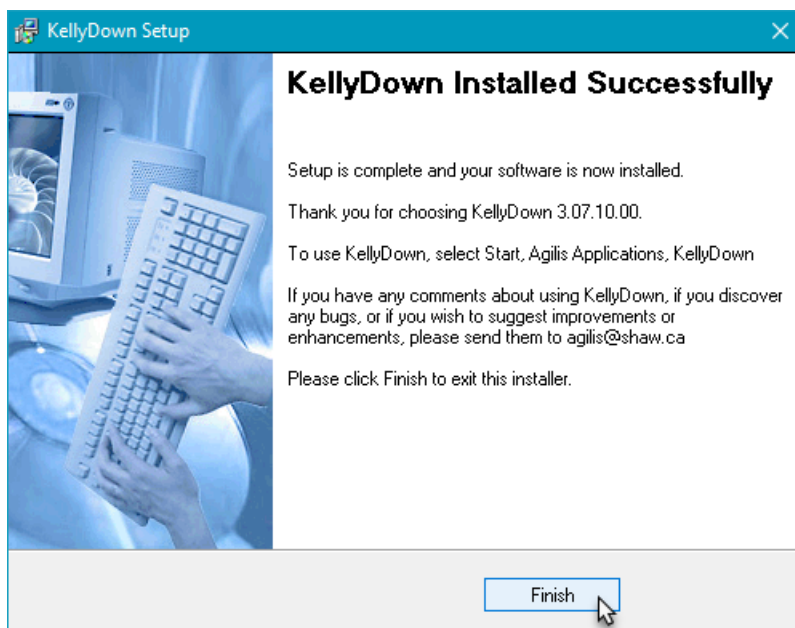
When KellyDown Setup has enough information to install the software, you will be prompted for final confirmation before the software is installed. Click on the **Next** button to proceed with the installation.



Wait while KellyDown Setup installs the software onto your computer.



After the software has been installed, a message will tell you how to start the KellyDown application. Click on the **Finish** button to close KellyDown Setup.



---

**Tip:** if you already have KellyDown installed on your computer, you just need to open the **Help, Check for updates** menu in KellyDown and after confirming; KellyDown will download and install the latest version automatically.

---

If you have any problems installing KellyDown, please contact *KellyDown Support* at the following email address:

[support@kellydown.ca](mailto:support@kellydown.ca)

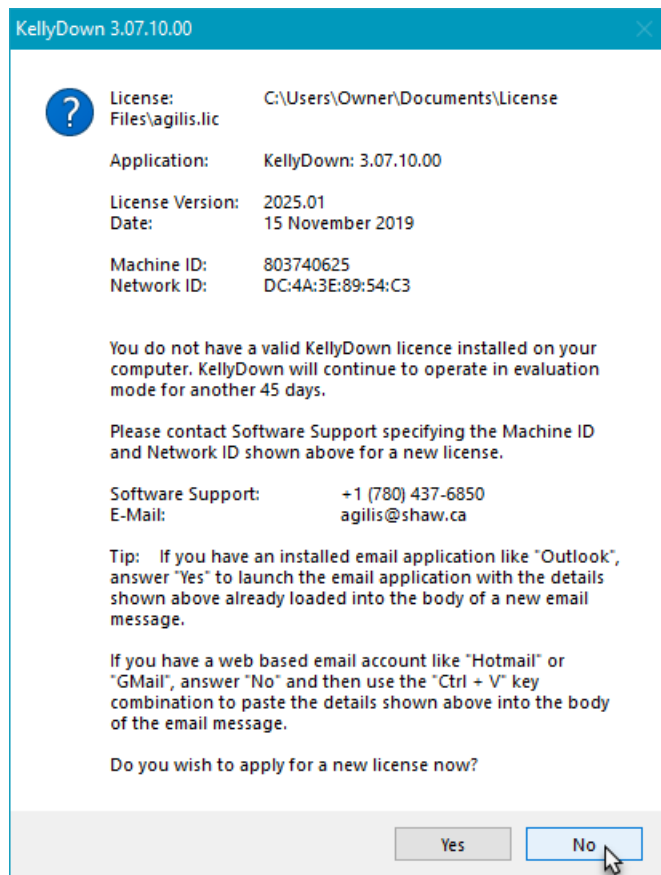
## D. Starting KellyDown

To start KellyDown, double click on the **KellyDown** shortcut icon on your desktop or select **All Programs, Agilis Applications, KellyDown** from the Windows® **Start** menu.

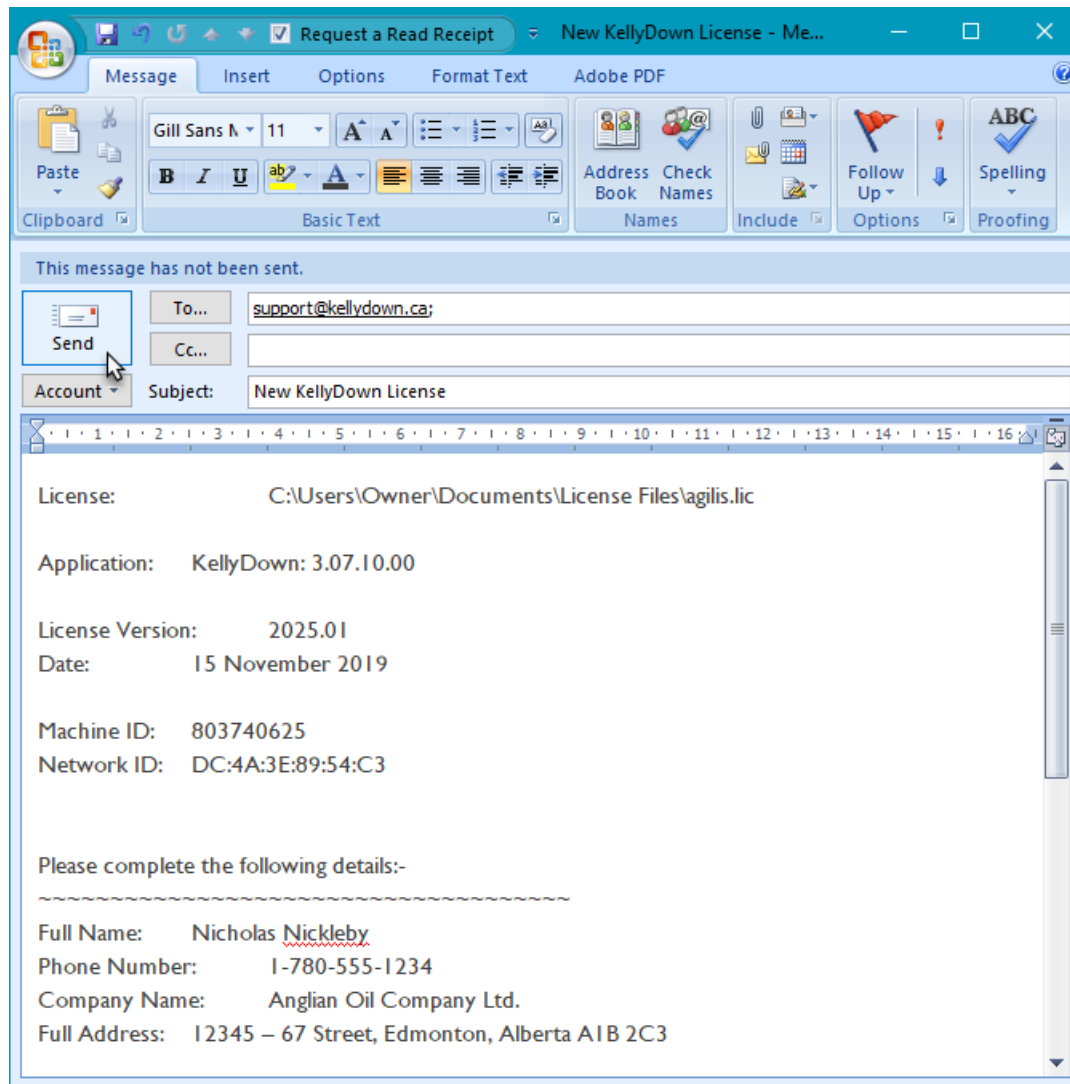


When KellyDown loads for the first time, a message will inform you that you do not have a valid KellyDown license installed on your computer. KellyDown will continue to operate in limited evaluation mode even though you do not have a valid license.

Limited evaluation mode allows you to perform all of the functions in the licensed version except save proposal data and/or survey data to the database.



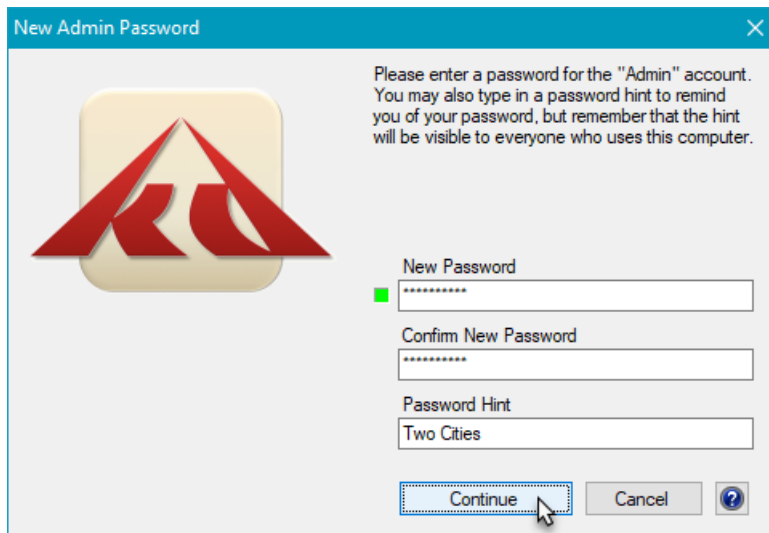
To unlock the software or to apply for a Fully Functioning Evaluation License, send an email to **KellyDown Support** at [support@kellydown.ca](mailto:support@kellydown.ca) (or to your local or company designated KellyDown support person), quoting the information displayed on the message. If an email application (like Microsoft Outlook) is installed on your computer, click on the **Yes** button to launch the email application with the **Agilis** email address and license information filled in for you. Complete the rest of the information shown in the email message...



If you have a web-based email account (like Hotmail or Gmail or a web-based company email account) answer **No** to the question and use the **Ctrl-V** key combination to paste the license information into the body of a new email message.

Send the email to [support@kellydown.ca](mailto:support@kellydown.ca) or to your company's designated KellyDown support person and Agilis Software Solutions (or your company's KellyDown support person) will send you a license within two (2) business days. You may continue to use KellyDown in evaluation mode until you receive the KellyDown license. When you receive the license, copy it to the folder shown in the email message. If you need to be reminded of the folder location, simply run KellyDown again to display the message.

KellyDown will then prompt you for a password for the **Admin** account in the **Example Database**.

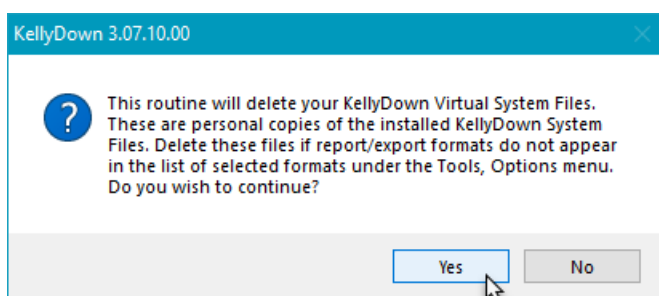


Enter a password of at least six characters. Try to use a password that contains upper and lower case characters, numbers and special characters, e.g. & or \$. An indicator next to the password shows you how strong your password is. Red indicates a weak password and green indicates a strong password.

Confirm the password and then enter a hint to remind you of the password in case you forget it at a later date. Use a password and hint combination that only you understand. Click on the **Continue** button to start using KellyDown.

---

**Important:** If you are installing KellyDown on a computer running Windows 7 or later on which a previous version of KellyDown was installed, you may need to **Reset the KellyDown Virtual System files**. Virtual System Files are part of the Windows security system and prevent older files from being overwritten. However, this may prevent some important KellyDown system files from being updated to the new version. To allow these to be updated, we have added a function to KellyDown that deletes the old versions of the files; simply open the **Administration, Utilities** menu and click on **Reset KellyDown Virtual System Files**.



Click on the **Yes** button to delete the files.

---

When you run KellyDown for the first time with a valid license, depending on your company and regional location, KellyDown will be configured with the appropriate company branding and preferred options. If however, you wish to change these options, simply open **Administration, System Settings** and adjust the options to suit your requirements. Please refer to the **User Manual** and **Getting Started Guide** for more detailed instructions.

If you have any comments about using KellyDown, if you discover any bugs, or if you would like to suggest improvements or enhancements, please contact *KellyDown Support* at the following email address:

[support@kellydown.ca](mailto:support@kellydown.ca)

## *E. History*

**Version 1.00.00.00 – released on 1<sup>st</sup> March 2012**

**Version 2.00.00.00 – released on 24<sup>th</sup> May 2013**

**Version 3.00.00.00 – released on 19<sup>th</sup> June 2015**

**Version 3.01.00.00 – released on 25th March 2016**

**Version 3.02.00.00 – released on 8th July 2016**

**Version 3.03.00.00 – released on 14th October 2016**

**Version 3.04.00.00 – released on 2nd December 2016**

**Version 3.05.00.00 – released on 17th March 2017**

**Version 3.06.00.00 – released on 18th August 2017**

**Version 3.07.00.00 – released on 1st June 2018**

**Version 4.00.00.00 – released on 24th August 2020**

**Version 4.01.00.00 – released on 24th August 2021**

**Version 4.01.01.00 – released on 15th November 2021**

**Version 4.01.02.00 – released on 4th February 2022**

**Version 4.01.03.00 – released on 23rd February 2023**

**Version 4.01.03.07 – released on 15th September 2023**

**Version 4.01.04.00 – released on 1st October 2023**

### **Updated KellyDown Website**

**Updated links to new download site that enables Check for updates and Download Help functions etc. Users need to download and install the patch (or full setup) from <http://www.kellydown.ca/download> if the currently installed version of KellyDown is earlier than 4.01.04.00**

- Switched to updated website.
- Added option under the View menu to show or hide inactive profiles in the Database Explorer. You may also use the F6 key to show or hide inactive profiles.
- Added new function to Survey Editor and Slidesheet Editor to create a new concatenated survey from surface.

**Version 4.01.04.01 – released on 7th October 2023**

- Updated links to new download site that enable Check for updates and Download Help functions etc. Users need to download and install the patch (or full setup) if the currently installed version of KellyDown is earlier than 4.01.04.00 .

#### **Version 4.01.04.02 – released on 13th October 2023**

- Fixed bug introduced in version 4.01.04.01 that prevented KellyDown from launching if there was no internet connection.
- Fixed bug in Survey Import routine where data wasn't converted properly when importing data from a file where the depths were in metres when the depths in KellyDown were set to a different unit.
- Modified export and report modules whereby company specific formats are now exposed to all users, thereby allowing contract directional drillers who have their own KellyDown licenses to output data in formats that were previously only available to companies who had specifically requested those formats.
- Modified Compass import routine whereby importing a single profile into KellyDown will cause KellyDown to search for the corresponding tie-on depth in all of the existing profiles under the same well and ask the user if he or she wishes to tie the new data onto that parent, thereby simplifying the task of updating a new wellplan when one is sent to the rig from the well-planning department.

#### **Version 4.01.04.03 – released on 7th November 2023**

- Fixed bug in daily drilling export function where wrong records were exported when drilling run contained only records with no increase in bit depth.
- Fixed bug in daily drilling export function where run number wasn't updated when the run number increased during the period covered by the daily report.

#### **Version 4.01.04.04 – released on 21st December 2023**

- Fixed bug in proximity scan module where the size of the uncertainty ellipsoid wasn't calculated correctly for ISCWSA Rev.5 MWD+IFR error models under certain conditions.
- Fixed bug in Quick-Scan module where distance and direction to adjacent well wasn't calculated correctly when Last Survey Range was selected.
- Modified Pipe Tally module whereby the user may now paste a collection of records consisting of a description followed by a pipe length in the spreadsheet from which KellyDown will calculate the survey station depths etc. from the BHA back up to surface.
- Modified Proximity Scan module whereby forward projections are interpolated at the same user defined scan interval as the survey data for detailed proximity reports.
- Added new option to Proximity Scan Options dialog named Bit Projection, which by default scans from the last survey depth to the bit depth. If the scan is called from the main KellyDown screen or from the Survey Editor, a straight line projection from the last survey to the bit is assumed. If the scan is called from the slidesheet, the motor output over the slide-ahead distance and then a straight line projection to the bit is assumed. If the scan is called when a Forward Projection module is open, information is copied from the forward projection. The user may modify the End Measured Depth if preferred.

#### **Version 4.01.05.00 – released on 8th January 2024**

- Added function under the Administration, Utilities menu to move the complete KellyDown Documents folder to a different location. This may be used to move the default KellyDown Documents folder out of the Windows Documents folder if the Windows Documents folder is located under the OneDrive folder, which could potentially cause problems for very large projects. It is recommended that the KellyDown Documents be moved to the root of the C: drive, i.e. C:\KellyDown Documents.
- Modified KellyDown Installer whereby it checks the location of the KellyDown Documents folder and updates new files to the same location.
- Added a routine when KellyDown starts, to check the existence of the KellyDown Documents folder and if one is not found, KellyDown will prompt the user to locate the folder manually.
- Moved menus for importing from a Compass transfer file from the Administration, Utilities menu to the File menu.
- Added option under the main KellyDown View menu to Show or Hide inactive profiles in the Database Explorer. Pressing the F6 key has the same function.

#### **Version 4.01.05.01 – released on 26th January 2024**

- Added several new ISCWSA Rev.5 IPM Error Models to installed database.
- Added new Proximity Report Type named “Email Summary” to list of Proximity Scans whereby the current well is projected from the last survey to the bit depth using the motor output and slide ahead values from the Slidesheet Editor and then straight extrapolated to one, two and three times the dogleg reference distance. This projection is then scanned for proximity against all selected wells in the Database Explorer and the results are automatically emailed to all Alert Recipients selected under Job Properties, Alerts<sup>12</sup>.
- Modified Instrument Performance Import module whereby the user may now select which error models he or she wishes to import from a .kdemf file. Use this function to distribute company approved IPM files to rig personnel.
- Added ability in System Settings whereby holding down the Ctrl key whilst clicking on the “Import error models from a transfer file” button will download the latest copy of the Instrument Performance Models from the KellyDown download site and present the user with a list from which he or she may select IPMs to import into the current System database. Selecting files will either import new files or update those that already exist under the same name.
- Added new Scan Range option to Proximity Scan Options dialog named Bit Projection, which allows the user to perform a proximity scan along the projection to the bit.

#### **Version 4.01.05.02 – released on 9th February 2024**

- Added new Activity to Slidesheet Editor called Bit Projection, which calculates projection to the bit based on the Bit Distance, Motor Output, Slide Ahead Distance and Toolface Orientation, and adds a temporary survey to the slidesheet from which you may determine the offsets to the plan, dipping planes, hardlines etc. You may also edit the depth, inclination and azimuth of the bit projection to see further ahead of the bit if desired<sup>12</sup>.
- Added function to Visualiser whereby holding down the Shift key and clicking on a Dipping Plane (after having first initialised a dimension line by holding down the Ctrl + Shift keys) will show the distance from the initial point to the point on the dipping plane that is vertically above or below the initial point.
- Added function to Dipping Plane Editor which toggles between two possible calculation types. The first is typically used in conventional drilling where a dipping plane is referenced to a vertical depth (or sub-sea depth) below the well origin and the dipping angle is entered by the user. The second is typically used for river crossings to define ground level where the user enters vertical depths at each of several distances from the well origin and the dip angle is calculated by the software. Toggle between the two methods by clicking on the Toggle Calculation Method button on the toolbar.
- Added function whereby KellyDown checks for and displays messages from Agilis Software Solutions when KellyDown starts, thereby allowing important messages to be delivered directly to KellyDown users. Each new message is displayed only once. The last read message may be viewed again by selecting the View, Start-up Message menu.

#### **Version 4.01.05.03 – released on 23rd February 2024**

- Fixed bug in Magnetic Calculation model where Description for HDGM models showed Magnetic Model was HDGM 2010 even for later dated models.
- Changed the way in which KellyDown reacts when clicking on an editable dropdown list in worksheets whereby it now selects the text in the cell.
- Added new Customer Option to show the Activity Chart as a Pie Chart instead of a Bar Chart in Drilling Reports<sup>12</sup>.
- Added ability to append more than one Bit Projection activity to the bottom of a slidesheet. Also added function where pressing the Esc key will delete any appended Bit Projections from a slidesheet<sup>12</sup>.

#### **Version 4.01.05.04 – released on 10th April 2024**

- Fixed bug in Slidesheet module where the Adjust Slidesheet Depths routine didn't work.
- Fixed bug in KellyDown Visualiser where clicking on a solid lease line to measure the distance from a profile caused an error message.

- Fixed bug in KellyDown Visualiser where clicking on a profile on other than the current structure did not accurately position the cursor when the North Reference was True North.
- Fixed bug in Dipping Planes Editor where the Driller's Dip Direction wasn't enabled when the option was set to define the start and end dip depths.
- Improved the logic by which the major axes are drawn and labeled in the QuickScan module.
- Added function in Visualiser where holding down the Ctrl + Alt keys when clicking on a profile will cause the dimension line to be initialised at the last survey record for the profile section.
- Added function to Slidesheet Editor whereby a backup of the slidesheet is saved at regular intervals during editing so that it may be recovered if KellyDown detects that the slidesheet data was not saved at the end of the last editing session due to a system crash or power outage.

#### **Version 4.01.05.05 – released on 8th May 2024**

- Fixed bug in Compass import module where user was warned about orphan profiles from previously imported Compass profiles.
- Fixed bug in Proposal Editor where a radius of curvature value was not correctly converted to a dogleg rate when the dogleg units were set to other than metric.
- Updated Help and User Manual.
- Added function to Visualiser module where pressing the B keyboard key will toggle between a light and dark background.
- Modified Proposal Editor whereby each row in the spreadsheet is identified by a colour that matches colours in the KellyDown Visualiser making it easy to identify the corresponding proposal sections in the Visualiser. The colours in the Visualiser revert to the default or user-defined colour when the proposal editor is closed.
- Added Sort button to Columns Editor which sorts and un-sorts the available fields alphabetically.
- Added UTM Zone 55 on Geodetic Datum of Australia 2020 (GDA2020).

#### **Version 4.01.06.00 – released on 23rd August 2024**

- Fixed bug in Components Catalogue editor where importing a catalogue from a KellyDown transfer file didn't work properly.
- Fixed bug in Survey Export to a Winserve .say file where the Northing and Easting coordinates were exported incorrectly.
- Fixed bug which caused file not found errors to be displayed when importing from a Compass Transfer File if a magnetic model did not exist in KellyDown or was named differently in KellyDown.
- Added menu option in Component Catalogue to purge unused component classes.
- Added ability to export and import components between the Components Catalogue Editor and Microsoft Excel.
- Added option under Tools, Options, Proximity Options to find the closest well for only the bottom five survey stations when the Survey Editor or Slidesheet Editor opens, thereby speeding up loading of the survey editor and slidesheet editor if closest well columns are present.
- Added option to show North/South of Plan and East/West of Plan columns in Survey Editor, Slidesheet Editor, custom reports and custom export formats.
- Added function to Slidesheet Editor under the Tools menu, to paste an unlimited number of interpolated HiFi Nav corrected surveys into an existing slidesheet. The surveys are inserted into the Slidesheet as Deviation Surveys<sup>13</sup>.
- Modified Drilling Reports module whereby Deviation Survey activities whose duration is zero hours are not shown in Activity and Drill Records sections of reports.

#### **Version 4.01.06.01 – released on 12th September 2024**

- Added functions to the Components Catalogue Editor whereby you may now import and export components to and from component catalogues files.
- Added functions to the Components Catalogue Editor whereby you may now import and export the complete component catalogue to and from component files.

- Added ability to update all surveys and slidesheets from surface to the bottom of the current slidesheet with corrected interpolated HiFi Nav™ surveys<sup>13</sup>.

**Version 4.01.07.00 – released on 1st November 2024**

**Updated KellyDown Licensing Mechanism**  
**Versions of KellyDown prior to 4.01.07.00 will not work with KellyDown licenses issued after 31<sup>st</sup> December 2024.**  
**Use the Help, Check for updates menu in KellyDown to download and install version 4.01.07.00.**  
**If Help, Check for updates doesn't work, manually download and install the latest patch from <http://www.kellydown.ca/download>.**

- Fixed bug in Quick Scan module where measured depths weren't shown correctly when the module first opened.
- Fixed bug in Dipping Planes Editor where values copied to the clipboard were copied in metres even when the units were set to feet.
- Updated Proximity Reports whereby the first column that contains the structure, well and profile name is now wrapped if the text does not fit inside the column.
- Updated the licensing mechanism whereby the KellyDown license may now be shared by all Windows User Accounts on a computer on which KellyDown has been installed<sup>13</sup>.
- Updated Quick Scan module whereby measured depths and pseudo clearance factors are now shown in tooltips on full scan plots. Also added a line representing the pseudo clearance factor limit to ladder plots and excluded overlapping lines on child and parent profiles.
- Added option to copy polygon target points to the Windows clipboard, from which they may be pasted into Microsoft Excel or into the Hard Line Editor.
- Added option under the Project menu to recreate the Structure, Well and Profile IDs from their respective Names<sup>13</sup>.

**Version 4.01.07.01 – released on 20th December 2024**

- Improved QuickScan module by minimising effect of jumbled highside azimuths in full scans where inclinations are less than 6°.
- Added option in Slidesheet Editor to delete all HiFi Nav™ records in the current slidesheet and optionally in all parents including slidesheets and surveys<sup>13</sup>.
- Added option under Project menus to recreate Profile IDs from Profile Names using different methods (after importing from a Compass transfer file).
- Added IGRF 2025 Magnetic Model to KellyDown setup.

**Version 4.01.07.02 – released on 14th January 2025**

- Fixed bug in Remote Monitoring Simulator that prevented it from working with recent modifications to the slidesheet.
- Added optional label to top left of Visualiser showing the current well name and current profile name.
- Added handle to Visualiser that allows user to hide or show the selection panel to the left of the Visualiser.

**Version 4.01.07.03 – released on 3rd February 2025**

- Fixed bug in Oasis export file where Survey Depth was sometimes mislabelled as Measured Depth.
- Fixed bug in custom export routine where KellyDown saved a value in scientific notation if it was close to zero but not zero.
- Fixed bug where new WMM Magnetic Model 2025 wouldn't calculate.

- Added function to ROC Edition of KellyDown whereby pressing the F4 key will alphabetically arrange all instances of KellyDown on the computer monitor depending on how many instances are currently active.
- Added status indicator bar to bottom of ROC Edition screen that turns red to indicate when new data arriving in the ROC Edition is outside predefined tolerances, i.e. distance to closest well, distance from plan, hard lines or lease lines etc.
- Added option to Client Configuration that sounds a ping when new data arrives from the remote server. A more intrusive sound is emitted if new data breaches predefined tolerances.

#### **Version 4.01.07.04 – released on 14th March 2025**

- Minor bug fixes.
- Added function to Edit Tie-on dialogue where, if the profile is an orphan, clicking on the button at the bottom right will search for the most probable parent survey and tie-on depth.
- Improved custom export module whereby comments, casing sections, survey tools and formation tops are now included in the Comments column at interpolated depths if the custom format includes only survey type columns and a Comments column and the option to include embedded comments has been checked on the Export Option dialog.
- Added function to KellyDown start-up where, if no recent databases exist in the Recent File list (i.e. after KellyDown is first installed), KellyDown will check if any KellyDown databases already exist under the Public Documents/KellyDown Documents folder, and if so, will add them to the top of the Recent Databases list.
- Modified Slidesheet whereby appending a Bit Projection activity will assume inclination and azimuth values based on the slide seen and toolface orientation values.
- Added option to select the Reporting Time for custom export files and custom reports if a Daily Export/Report is selected in Export/Report Options.

#### **Version 4.01.07.05 – released on 18th April 2025**

- Fixed bug in Slidesheet Editor where the bottom survey of each run wasn't updated when applying HiFi Nav corrected survey data.
- Fixed bug in remote monitoring module where warning message stated that the credentials between the current well and the remote well did not match even when they did (update function worked properly though).
- Fixed bug in Proposal module where error was thrown when user entered a value directly into the spreadsheet that wasn't on the row immediately below the last row calculated.
- Added option under Tools, Options, Display Options to automatically resize column widths to fit their contents when each spreadsheet opens<sup>14</sup>.
- Added function to Target Editor whereby pressing the = key while editing a Target ID will insert the current Well ID in front of the Target ID if it doesn't already contain the Well ID.
- Added function to the main KellyDown screen, the survey editor and the slidesheet editor whereby holding down the Ctrl key when clicking on the Targets button or the Edit Targets menu will open the current target directly instead of the list of targets attached to the current well.
- Added ability to create a target from a Formation Top or Dipping Plane.
- Added a new textbox to the Target Editor, which shows the vertical section distance to the target plane along the target plane axis. Use this to move the target forward and backwards along the target plane axis. Enter either the actual target section distance or a value preceded by a + or – sign to adjust the current target section distance<sup>14</sup>.
- Added a new function to the Target Editor whereby the target thickness may be adjusted using a positive or negative value, by preceding the value with a + or – sign.
- Added Intermediate, Tangent and Nudge sections to list of Hole Sections in the slidesheet module.
- Modified the Ouija Board interface whereby changing the dogleg rate will automatically centre the projection at the target centre if the “Automatically centre new survey data” box is checked.
- Updated Visualiser whereby lease lines are now updated dynamically as they are edited in the Lease Line Editor.

#### Version 4.01.07.06 – released on 13th June 2025

- Added function whereby pressing the F5 key or selecting the View, Refresh worksheet menu will automatically resize all columns in a worksheet to the width of their respective contents<sup>14</sup>.
- Added option to assign an offset well to a proposal and added columns to the proposal editor that show proximity etc. to the offset well.
- Added ability to select a proposal as offset well (previously you could only select a survey).
- Added optional columns to the proposal editor that show the distance above and below formation tops and dipping planes<sup>14</sup>.
- Added optional columns to the proposal editor that show the name, distance and pseudo clearance factor of the closest well<sup>14</sup>.
- Added option to freeze a column in the proposal editor<sup>14</sup>.
- Added Auto-Recovery function to Slidesheet Editor whereby the slidesheet is saved to an auto-recovery file after every survey entry. If KellyDown crashes or the computer shuts down unexpectedly for any reason, when the slidesheet is reopened, KellyDown will ask the user if he or she wishes to recover the data from the recovery file that may have been lost<sup>14</sup>.
- Added option to show uncertainty ellipses at every 6 metres or 20 feet (instead of 30 metres or 100 feet) in the Visualiser by holding down the Ctrl key whilst also checking the Uncertainty Ellipses checkbox<sup>14</sup>.
- Modified function of F4 key where it will now bring all KellyDown instances to front as well as organising them alphabetically. Also added function whereby subsequent ROC instances are always displayed on top when first opened<sup>9</sup>.
- Modified Export module whereby Bit Projection activities are not included in Oasis export files.
- Updated Help and User Manual.
- Modified logic behind Administration, Utilities, Copy Preferred Magnetic Model to all Profiles in the Current Project menu whereby the routine will now only copy the Preferred Magnetic Model to all Profiles whose current Magnetic Model is set to “User Defined”, unless the user holds down the Ctrl key when clicking on the menu, in which case it will copy the Preferred Magnetic Model to all profiles in the current project.
- Added button to Print Option dialog whereby the user may open the Profile Properties to change the Report Comments.
- Added sub-menu to Administration menu where the Administrator may purge all files in the KellyDown backup folder that are more than 365 days old<sup>14</sup>.

#### Version 4.01.07.07 – released on 11th July 2025

- Fixed bug in Export module where embedded comments weren't always included in the exported data.
- Added option in Tools, Plot Options to incorporate the Structure Surface Errors into Uncertainty Ellipses in the KellyDown Visualiser. Checking this box will add the surface error of each structure being scanned and the structure error of the reference well and to each offset uncertainty ellipsoid if the well isn't on the same structure as the reference well, thereby enabling the accurate display of ellipsoid separation where Structure Surface Errors have been defined<sup>14</sup>.
- Added ability to show uncertainty errors as conic ellipsoids instead of as a series of individual ellipses in Visualiser. Set the option whether to show regular ellipses or conic ellipsoids under Tools, Options, Plot Options. You may also switch between the two options by holding down Ctrl key when checking the Uncertainty checkbox in the Visualiser. Conic Ellipses are only shown if there are fifty or less survey sections selected to help prevent out-of-memory errors<sup>14</sup>.
- Added option in Tools, Option, Plot Options to set the opacity of conic uncertainty ellipses in the Visualiser<sup>14</sup>.
- Modified the Drillstring Editors whereby you may now select individual components from a dropdown list, or include the Select column in the list of columns that will allow you to select components from a detailed list of components already stored in the database. You may also manually enter each component individually under the Description column and then use the Update Catalogue menu to add any components to the Components Catalogue that don't already exist.
- Added check when importing an IPM file that the file contains valid #ShortName, #Description and #ToolGroup information before allowing it to be imported into KellyDown.

#### **Version 4.01.08.00 – released on 22nd August 2025**

- Fixed bug in Survey editor module and Slidesheet module where formation tops weren't shown unless they were penetrated by the current profile.
- Updated to latest version of Agilis Remote Access Utility (TeamViewer 15.68.5) allowing clients' own version of TeamViewer to be used for KellyDown support.
- Added option in Custom Export routine to save an Excel file to either an .XLS file or an .XLSX file. Select the appropriate format from the Export dialog box<sup>14</sup>.
- Added ability to update multiple surveys and slidesheets from surface to the bottom of the current slidesheet with corrected interpolated HiFi Nav™ or roundLAB™ surveys<sup>13</sup>.
- Added ability to automatically update all surveys in the survey editor or slidesheet editor with corrected survey data from a roundLAB watch file. Simply configure the roundLAB (.csv) file as a watch file and KellyDown will update the current slidesheet survey data whenever the file is updated with corrected surveys<sup>14</sup>.
- Added ability to update a Magnetic Model file with a newer version (specifically for the WMM magnetic model where the file name doesn't change from one version to another). Hold the Ctrl key down and click on the Edit magnetic model button to import a different file for an existing model.

#### **Version 4.01.08.01 – released on 12th September 2025**

- Fixed bug introduced in version 4.01.08.00 where the dipping planes weren't shown in custom reports and custom export formats even when those columns were selected.
- Added options in the Tie-on dialog when KellyDown searches for which profile a proposal should be tied on to, to associate the discovered survey with the proposal and deactivate all other proposals under the same well.

#### **Version 4.01.08.02 – released on 24th October 2025**

- Fixed bug in slidesheet editor where updating parent surveys and slidesheets with corrected HiFi Nav data caused corrections to be applied to parent profiles below the tie-on depth of the corrected child profile where the parent profile had been sidetracked by the child profile<sup>13</sup>.
- Fixed bug in Drillstring Editor where components weren't saved to the database if a Component Type wasn't selected by the user.
- Fixed bug in Export to an .XLSX file where the routine didn't always write the file.
- Added option to include Depth vs. Inclination and Depth vs. Azimuth charts in Survey and Proposal Reports<sup>14</sup>.
- Added popup menu to the Well that will alternate the colours of all surveys and proposals below the current well.
- Added option in the Drillstring Editor to change the Component Type for an existing component by holding down the Ctrl key when selecting a Component Type from the dropdown list.

#### **Version 4.01.08.03 – released on 9th December 2025**

- Fixed bug in Export to a .XLS or .XLSX file where the routine didn't always write to a file stored under an active OneDrive folder.

#### **Version 4.01.08.04 – released on 23rd January 2026**

- Fixed bug where Projection Depth didn't automatically update to end of projection when the Include Target Projection checkbox was checked.
- Changed the default "KellyDown Documents" folder to *C:\Users\[User]\KellyDown Documents* to resolve issues associated with installing a database under the OneDrive folder. A shortcut to the *KellyDown Documents* folder is installed on the user's Desktop.

#### Version 4.01.08.05 – released on 10th April 2026

- Fixed recently introduced bug where RKB lateral offsets weren't calculated correctly for slant wells.
- Fixed bug where the Pipe Classes weren't persisted when importing to and from KellyDown Drillstring transfer file (.kdsdx file).
- Added function whereby when KellyDown starts, it checks if the KellyDown Documents folder is located under OneDrive, and if so, prompts the user to move it to a new location.
- Improved the Auto-Recovery function in the Slidesheet Editor whereby the auto-recovery file is saved to a backup file each time the Slidesheet Editor is closed. Up to seven days of recovery files are saved to the backup.
- Added new menu to the Slidesheet's File menu to recover the backed up slidesheet data<sup>14</sup>.
- Added function whereby the Proposal Editor, Survey Editor, Slidesheet Editor and Visualiser are dynamically updated when dipping planes and formation tops are edited.
- Modified Dip Plane Editor whereby the user may now enter the Dip Angle value when the calculation method is set to Dip Plane Start and Dip Plane End option, which will recalculate the Dip Angle End Depth based on the Start Offset, Start Depth, Dip Angle and End Offset values.
- Modified Dip Plane Editor whereby the user may press the "=" key in the Dip Plane Offset Start or Depth Start field to automatically copy the Dip Plane Offset End or Depth End values from the previous row.
- Modified Well Properties for slant wells whereby changing the Slant Inclination or Slant Azimuth will recalculate any existing profiles under the well with the new data, i.e. the first and second lines in each profile will contain the RKB survey at zero measured depth and zero vertical depth and the second line will be interpolated at ground level where the Northings and Easting values will both be zero.
- Added function where KellyDown also checks for the latest version of the Agilis Remote Access Utility when it checks for new versions of the KellyDown and Help files, and downloads and installs the latest version when confirmed by the user.
- Improved Project Properties whereby all associated slidesheet survey azimuths are automatically updated when a coordinate system is changed. Previously, KellyDown prompted the user to update the slidesheet azimuths whenever a slidesheet was subsequently opened.

#### Version 4.01.08.06 – released on 24th April 2026

- Added "x" and "y" vector terms to uncertainty error calculations as per ISCWSA Rev.5 and added a warning message if new vector terms are added in the future that are not already handled by KellyDown.
- Modified the KellyDown Install routines whereby the location of the *KellyDown Documents* folder is created under the *C:\Users\Owner\Documents* folder if the *My Documents* folder is located under the OneDrive folder. A *KellyDown Documents* icon is created on the user's Desktop to facilitate easy access to the *KellyDown Documents* folder if required.

---

<sup>1</sup>available with licenses 2014.07 or later

<sup>2</sup>available with Magnetic Ranging licenses

<sup>3</sup>available with licenses 2015.06 or later

<sup>4</sup>available with licenses 2016.03 or later

<sup>5</sup>available with licenses 2017.06 or later

<sup>6</sup>available with licenses 2018.06 or later

<sup>7</sup>available only with licenses issued by Agilis

<sup>8</sup>available with licenses 2020.04 or later

<sup>9</sup>available with ROC Edition licenses

<sup>10</sup>available with licenses 2021.08 or later

<sup>11</sup>available with licenses 2022.08 or later

<sup>12</sup>available with licenses 2023.06 or later

<sup>13</sup>available with licenses 2024.06 or later

<sup>14</sup>available with licenses 2025.06 or later